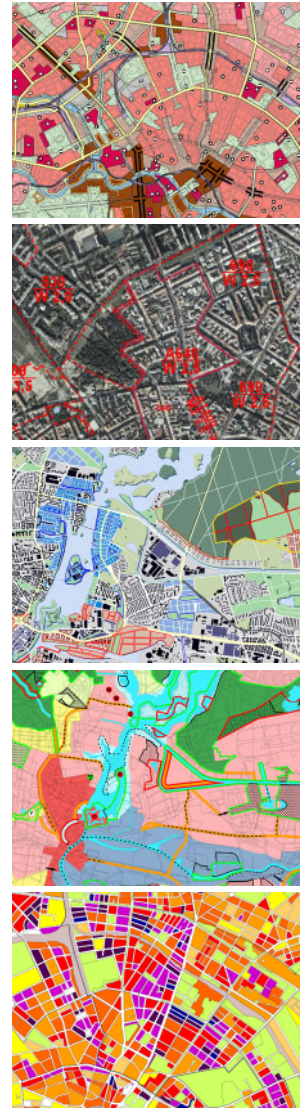


Due to its powerful programming facilities YADE technology is the ideal platform for fast and efficient development of applications and all kinds of custom made GIS-solutions. YADE provides Makro Language (YML) which orientates on SQL- standards and allows to analyze and manipulate geographic features as well as attributive data. In addition to this YADE Makro Language supports the creation of user defined commands, workflow automatizations and the design and implementation of customized user interfaces. YADE Makro Language is an integrated feature of YADE GIS and is delivered with the standard product.

„Ready to use“ application modules are available for town- and landscape planning, land survey register evaluation and urban park and tree management. Furthermore numerous application frameworks for a wide range of administrative tasks are available which can be adapted to local and custom specific requirements. Embeddable mapping and viewer tools enables customers to add GIS-functionality to legacy applications or to publish intelligent digital maps in a very cost efficient way.



### „Ready to use“ GIS-application modules

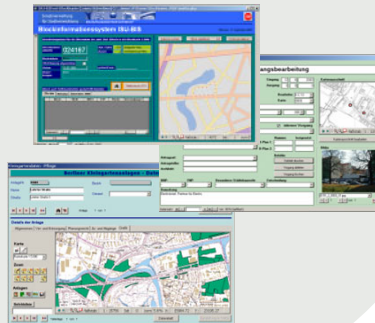
- land use plan
- land register
- park management
- landscape planning



### Interactive GeoPublishing components for DVD/CD-ROM



### Embedded mapping



Björn Dejoks  
SRP Gesellschaft für Stadt- und Regionalplanung  
Berliner Strasse 112 A  
13189 Berlin  
Germany

Phone : +49 304437210  
FAX: +49 3044372199  
Email: srp@srp-gmbh.de  
Internet: www.srp-gmbh.de

